



## ENGINEERED LUXURY VINYL GENERAL INSTALLATION INSTRUCTIONS FOR ANGLE-TO-ANGLE FLOORING

### WARNING

Prior to installation, please ensure that the product received is the correct style and color as well as to the customer's satisfaction. If there are any doubts, do not install the flooring and contact the retailer. Beaulieu® will not be held responsible for any costs relating to the installation of unsatisfactory or incorrect product.

### ACCLIMATION

Acclimation is a required procedure prior to the installation of Engineered Luxury Vinyl Flooring (ELVF). Store the UNOPENED BOXES in the room where the flooring is to be installed for at least 48 hours prior to installation. Always store the boxes on a flat and level surface; never store the boxes on their sides. Heating and air conditioning should be operational and set between 65 °F - 85 °F (18.3 °C - 29.4 °C) for the acclimation and installation period.

### RECOMMENDED TOOLS AND MATERIALS

- Safety glasses
- Measuring tape
- Square
- Utility knife
- Straight edge
- Spacers
- Chalk line
- Embossing leveler/floor patch (if necessary)
- 6 mil (0.006"/0.15mm) polyethylene (if necessary)

### UNDERLAYMENT

Underlayment is optional - Underlayment that is used should be no thicker than 0.06" (1.5 mm) and the density should be a minimum of 25 lb per cubic foot (11.34 kg per 0.028 m<sup>3</sup>). **DO NOT INSTALL A SEPARATE UNDERLAYMENT IF THE PRODUCT YOU PURCHASED ALREADY COMES WITH AN ATTACHED UNDERLAYMENT.**

### SUITABLE SUBSTRATES

Beaulieu ELVF can be installed over many floors. All carpeting and padding need to be removed. Make sure that the surface is clean, dry, structurally sound and flat within 3/16" per 10 foot or 1/8" per 6 foot radius (4.7 mm per 3 m / 3.2 mm per 1.8 m). Supporting floors must be rigid as too much deflection can result in a failed installation. Maximum deflection should not exceed 3/64" (1.1 mm).

Beaulieu ELVF should not be installed over plank floors, cushioned-backed vinyl flooring, asphalt-based floors, carpet, self-adhering plank or tile, laminate or other floating flooring or structurally-damaged concrete; concrete should be free from dust, solvents, paint, wax, grease, oil, sealing compounds or curing agents.

### **CONCRETE SUBSTRATES**

**Concrete subfloors must be inspected prior to installation and if they do not meet the following requirements, do not install flooring.** Concrete shall have a minimum compressive strength of 3500 psi. Concrete subfloors must be cured for 60 days prior to installation of the flooring, and should be tested for excessive moisture. Moisture vapor emission rate should not exceed 5 lb/1000 sq. ft. (2.27 kg/92.9 sq. m)/24 hours per ASTM F1869. When using the ASTM F2170 test method, the internal relative humidity should not exceed 80%, and the pH level should be between 7 and 9. If the concrete subfloor is not tested for moisture and pH and/or does not meet the stated requirements, a 6 mil (0.006"/0.15mm) polyethylene must be installed over the concrete prior to the installation of the finished flooring.

### **WOODEN SUBSTRATES**

Wood floors should be a minimum of 3/4" (19 mm) thick, APA approved grade tongue and groove plywood or 23/32" (18.25 mm) OSB, with a smooth finish, free from spring and deflection. If the wooden subfloor is not an APA approved flooring grade underlayment, a minimum of 1/4" (6.35 mm) approved wood underlayment must be adhered to the existing substrate. Make sure that the surface is clean, dry, structurally sound and flat within 3/16" per 10 foot radius (4.7 mm per 3 m). All fastener indentations and joints should be level and smooth using appropriate patching compounds. Deflection should not exceed 3/64" (1.1 mm).

### **EXISTING RESILIENT FLOORS**

When installing Beaulieu ELVF over existing resilient flooring, ensure that the existing sheet good or tile product is in good condition, that it was installed in the full spread glue method and is properly secured. Beaulieu ELVF can be installed over one layer of non-cushioned sheet good flooring. Existing tile or sheet resilient floorings should be stripped using a product that is an appropriate stripper for vinyl to remove wax or other contamination, rinsed with clear water and allowed to dry. Very smooth or high-gloss floors need to be lightly abraded to rough up the surface to allow proper adhesive bonding.

### **GYPSUM FLOORS**

Beaulieu ELVF can be installed as a floating floor over flooring grade gypsum subfloors when properly installed over a subfloor that is structurally sound and flat within 3/16" per 10-foot radius (4.7 mm per 3 m).

### **MARBLE, QUARRY TILE, TERRAZZO, CERAMIC TILE**

Properly cleanse substrate using a commercial degreasing/dewaxing solution. Grind or abrade any highly polished or irregular surfaces. Fill any low areas, chips and grout joints that may telegraph through the new flooring.

### **RADIANT-HEATED FLOORS**

Beaulieu ELVF can be installed over embedded radiant-heated floors provided the operating temperature never exceeds 85 °F (29.4 °C). The radiant system should be in operation for three (3) weeks prior to installation of the flooring. For 48 hours prior to and during installation, the system should be kept at 65 °F (18.3 °C). Once the installation is completed, the heat should be gradually increased by a maximum of 5 °F (2.8 °C) per day until the desired setting is reached. Do not use radiant heat systems that expose the flooring to wide variations in temperature, such as a wire induction mat system. The installation area of the flooring shall not contain heated and non-heated areas, unless expansion joints separate them. Keep in mind that loose rugs or carpets may accidentally function as heat insulators and raise the temperature to more than the tolerated maximum surface temperature of 85 °F (29.4 °C).

### **JOB SITE CONDITIONS/SUBSTRATE PREPARATION**

- Room temperature must be maintained between 65 °F (18.3 °C) and 85 °F (29.4 °C) at all times.
- Substrate should be free of dust, debris from paint, varnish, wax, oils, curing sealers, solvents and other foreign matter. Any adhesive residue from prior installations should be completely removed.
- Any looseness of the substrate should be secured.
- High spots should be levelled and low spots should be filled with a proper material to ensure substrate is flat within 3/16" per 10 foot radius (4.7 mm per 3 m).
- All construction seams, expansion joints, and holes should be filled level with the surrounding surface to eliminate telegraphing of such irregularities.

**Caution:** If you plan to remove old resilient flooring material or any type of old adhesive, please be aware that it may contain asbestos fibers or crystalline silica; therefore, avoid creating dust. Inhalation of such dust is a cancer and respiratory tract hazard and local regulations may require professional removal. Instructions for the removal of old flooring materials and adhesives may be found in the RFCI Recommended Work Practices for Removal of Resilient Floor Coverings. You may contact the Resilient Floor Covering Institute at 706-882-3833 or [www.rfci.com](http://www.rfci.com).

### **PATCHING AND LEVELING**

Use only cement-based patching and leveling compounds. Check with patching and leveling compound manufacturer for curing times. Check moisture levels before starting installation to ensure moisture levels are within guidelines as outlined in the "Concrete Substrates" paragraph.

The contractor or owner is responsible for cure time, moisture content testing, and the structural integrity of any leveling or patching compound used.

### **EMBOSSING LEVELER**

When installing over an existing resilient flooring material, an embossing leveler may be required to prevent the existing material pattern from telegraphing through the new material.

### **PRIOR TO INSTALLATION**

- Cartons should be stored horizontally at all times.
- Protect carton corners from damage.
- Do not install cabinets or kitchen island on your floating floors.
- Inspect all planks/tiles for visible defects and damage before and during installation. Do not install damaged planks/tiles. Beaulieu will not accept responsibility for claims on flooring installed with visible defects. During installation, inspect the groove area and remove any debris that may prevent proper assembly of planks/tiles.
- Beaulieu ELVF is production-run sensitive. Ensure that all planks/tiles you are installing come from the same production run. Beaulieu cannot guarantee that any future replacement or additional installation will match the originally-installed product.
- Ensure that all boxes are of the correct product and when installing, open several boxes at a time and mix planks/tiles from different boxes for best results and overall look.
- Room temperature should be no less than 65 °F (18.3 °C) for 48 hours before, during and after installation.
- Remove all existing moldings.
- Undercut doorway moldings to the thickness of the flooring.

- Beaulieu ELVF is a floating floor and should never be nailed down to the substrate.
- Beaulieu ELVF is intended for indoor use only.
- Determine in which direction the planks/tiles will be installed. It is recommended that the flooring be installed running parallel to the longest wall.
- Carefully measure the room to determine the width of the last row of planks/tiles. If the width is less than 2" (50 mm), excluding the tongue, the width of the first row of planks/tiles will have to be cut accordingly.
- A minimum of 1/4" (6.35 mm) expansion space is required around the perimeter of the room and all vertical objects.

### **COMMERCIAL INSTALLATION**

All commercial installations require approval by a Beaulieu sales representative.

Contact your Beaulieu retailer for further details.

### **INSTALLATION**

1. Begin laying planks/tiles from the left side of the starting wall and work to the right side. The tongue of the plank/tile should face the starting wall.
2. Place 1/4" (6.35 mm) spacers between the short and long side of the planks/tiles and the wall. Always position one spacer between the wall and where the planks/tiles join.
3. The end joints of the planks/tiles in the first row are assembled by inserting the tongue side into the groove side of the previous plank/tile at a low angle. Gradually lower the plank/tile down flat until the end joint closes, ensuring that the planks/tiles are perfectly aligned. Install remaining full planks/tiles in the first row.
4. The last plank/tile in the first row will need to be cut. Measure the distance between the wall and the surface of the last full plank/tile. Subtract 1/4" (6.35 mm) from this measurement to allow for the spacer. If this measurement is less than 8" (20 cm), the first plank/tile in the row should be cut. The first and last plank/tile in each row should be at least 8" (20 cm) in length. Planks/tiles are cut using a sharp utility knife and a square. Score the surface of the plank/tile with the knife and snap the plank/tile at the score line.
5. The remaining piece cut off from the last plank/tile in the first row may serve as the first plank/tile in the second row provided it is at least 8" (20 cm) long. Always stagger end joints from row to row a minimum of 8" (20 cm) apart.
6. Install the long side of the first plank/tile of the second row. Place a 1/4" (6.35 mm) spacer between the wall and the short side of the plank/tile. Insert the tongue side into the groove side of the plank/tile from the previous row at a low angle and lower flat to the substrate.
7. Install the second plank/tile of the second row. Position the long side of the plank/tile with the tongue side overlapping the groove of the planks/tiles in the previous row approximately 1/8" (3.2 mm). Then, angle the end joint into the previous plank/tile. Angle the plank/tile up and gently push forward until the plank/tile locks into the plank/tile of the previous row. Continue installing planks/tiles in the second row. It is important to make sure that the first two rows are straight and square as they can affect the entire installation.
8. Continue working from left to right, row by row. Be sure to maintain a 1/4" (6.35 mm) space around all walls and vertical objects. To maintain a random appearance, remember to offset end joints a minimum of 8" (20 cm).
9. Transition moldings are required every 60 feet (18.29 m) in any direction and at all doorways.

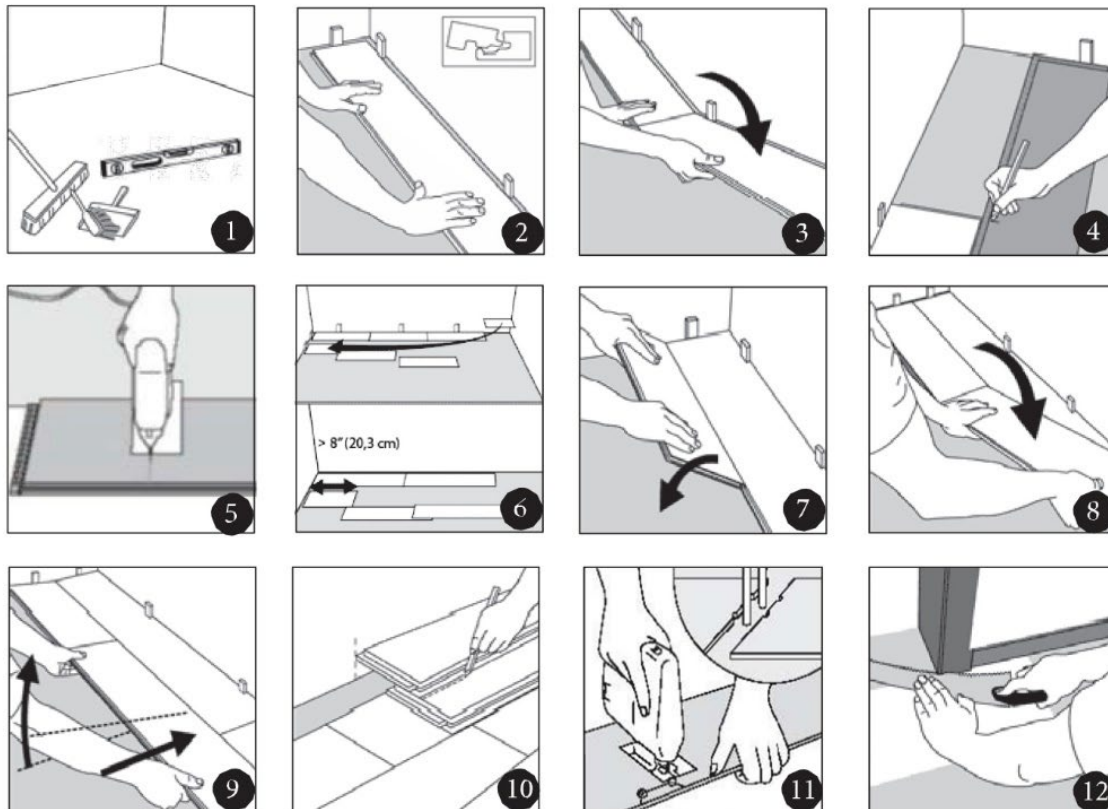
**FINISHING THE INSTALLATION**

- After all planks/tiles have been installed, remove spacers from perimeter of room.
- Do not fasten any moldings through the flooring.
- Install quarter-round or baseboard molding. Molding should be of sufficient size to cover the 1/4" (6.35 mm) space and should be fastened to the wall, not to the flooring.

**IMPORTANT**

- Use plywood to cover the top of the flooring when moving heavy furniture or appliances into position.
- Use floor protectors under the legs of furniture and chairs.
- Heavy furnishing loads placed on the locking ELVF can pin the product down to the substrate which may prevent the product from expanding and contracting evenly, causing side or end separation, peaking or gapping.
- Do not nail down Beaulieu ELVF.
- Beaulieu ELVF is intended for indoor use only.
- Beaulieu ELVF is warranted as a floor covering only.
- Post-installation temperature should be maintained between 65 °F - 85 °F (18.3 °C - 29.4 °C). Relative humidity should be maintained between 40% and 70%.
- **Engineered luxury vinyl flooring must be protected from direct sunlight exposure. Beaulieu recommends using UV protective film, blinds or curtains in all windows that provide direct sunlight to ensure that the products are not overheated.** Engineered luxury vinyl floor coverings exposed to excessive heat are subject to thermal expansion which may lead to buckling or peaking. Beaulieu will not be held liable for any claims or damages arising out of or related to the failure of the installation when the flooring is exposed to direct sunlight.

Follow the Beaulieu Care and Maintenance Guidelines to properly care for your flooring. These can be found on our website at [beaulieucanada.com](http://beaulieucanada.com) or you may contact your Beaulieu retailer.

**INSTALLATION ILLUSTRATIONS**

**INSTALLATION VIDEO**

<https://youtu.be/wRC1tBbhsuU>

**Homeowner Obligations**

To maintain warranty coverage and ensure fast and easy warranty service, the homeowner is responsible for the following:

- Keep five (5) planks/tiles of the ELVF product after installation for testing purposes.
- Keep and be able to provide the original sales receipt or documentation illustrating proof of purchase and installation date of the product.
- Make sure the flooring is installed according to Beaulieu Installation Instructions.
- Keep a list of cleaners used to maintain the flooring.

---

Please visit our website at [beaulieucanada.com](http://beaulieucanada.com) for the most up-to-date version of this document as it may have been revised and updated since this printed version.

Warranty Guide as well as Care and Maintenance instructions can also be found on our website at [beaulieucanada.com](http://beaulieucanada.com), or you may contact your retailer.